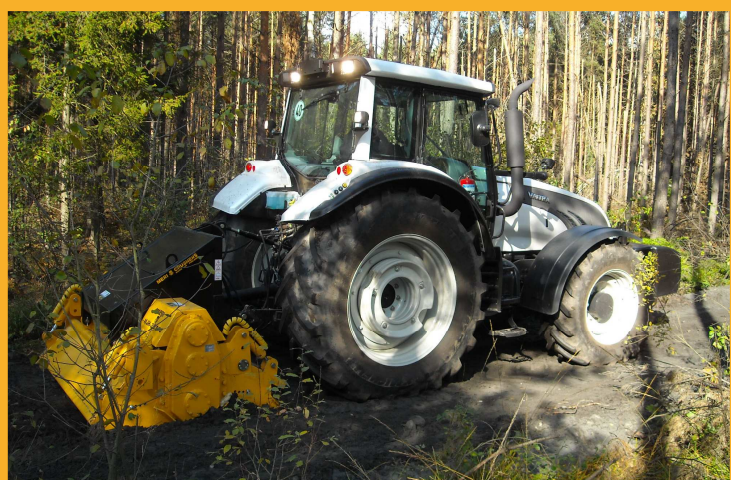


**MERIROAD**  
**RC-6000 DTG**

**For versatile crushing**



**MERIROAD**



# MERIROAD

## RC-6000 DTG

# For versatile crushing

### MERIROAD WORKING ENVIRONMENTS

- Crushing the ground before stabilizing,
- Preparing the subsoil for laying sett (car parks, roads, residential areas)
- Recycling of old cobbled and gravel roads, - Stabilization of grounds down to a depth of 30 cm on all types of roads, with easily accessible materials like cement, polimers, ash, dolomite, lime,
- Construction and redoing of forest roads, communal roads, drives to agricultural areas.
- Building outdoor feed pads

### EQUIPMENT

#### FEATURES

- Fixed counter blades
- Hardox liner (frame)
- STB-flat or UNTH Rotor with carbide cutters
- POC - Pressure operated safety clutch (SUOKONE patented)
- Possibility to turn the rotor

#### OPTIONS

- Hydraulic Top Link

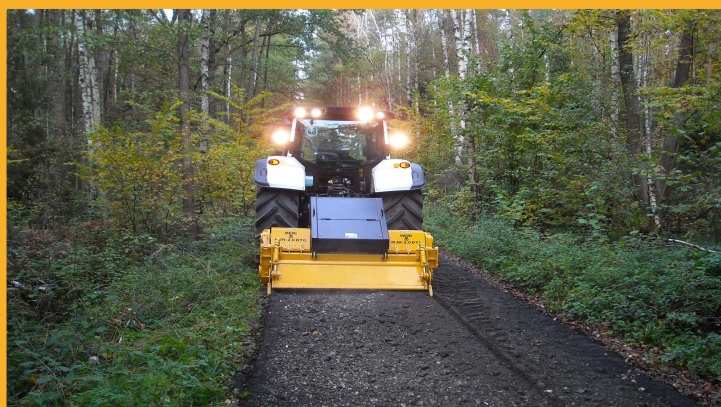


# MERIROAD

## RC-6000 DTG

# For versatile crushing

Base machine demand	RC-6191 DTG	RC-6221 DTG
Four wheel tractor		
Mounting	CAT 3	CAT 3
Auxiliary hydraulic	2 pcs. 2-way	2 pcs. 2-way
PTO	1000 rpm	1000 rpm
Working speed	Creeper gear	Creeper gear
<b>Technical data:</b>		
Power range	130—300 hv	130—300 hv
Transmission	Mechanical PTO	Mechanical PTO
Final gear	Gear (G-serie)	Gear (G-serie)
Clutch	POC - 3	POC - 3
Rotor diameter	600 mm / 24 inch	600mm / 24 inch
Rotor width	1950 mm / 77 inch	2250 mm / 89 inch
Cutter qty, STB-F	92 pcs	106 pcs
Working depth	300 mm / 12 inch	300 mm / 12 inch
<b>Main dimensions:</b>		
Lenght	1650 mm / 65 inch	1650 mm / 65 inch
Widht STG / DTG	2320 mm / 91 inch	2530 / 2620 mm 100 / 103 inch
Height	1370 mm / 54 inch	1370 mm / 54 inch
Weight	1940 kg / 4280 lbs	1940 / 2140 kg 4280 / 4720 lbs
Weight with options	2200 kg / 4850 lbs	2200 / 2400 kg 4850 / 5290 lbs



SUOKONE OY  
88610 Vuokatti  
FINLAND

tel. +358 86 66 2011  
suokone@suokone.com  
www.mericrusher.com