

MERICRUSHER

MJH-0.8 DT

For versatile crushing



MERICRUSHER

MERICRUSHER

MJH-0.8 DT

For versatile crushing

MERICRUSHER WORKING ENVIRONMENTS

FOREST / ORCHARD

- Crushing of stumps and roots
- Crushing of planting rows
- Soil preparing for planting

EQUIPMENT

FEATURES

- Welded fixed counter blades
- Welded hardox– liner in frame
- UNTH Rotor with cost effective carbide cutters multiple cutter options available
- POC - Pressure operated safety clutch (SUOKONE patented)
- Possibility to turn the direction of the rotor
- Guide plate (hydraulic front/rear)
- Standing feet

Base machine demand

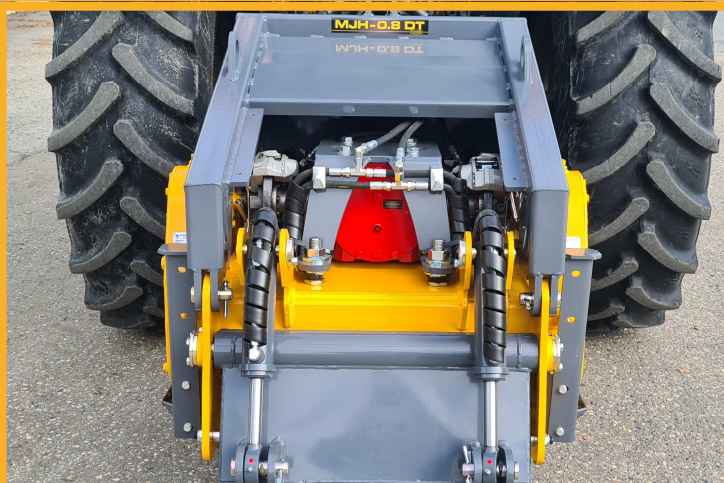
Tractor	
Mounting	CAT-2
Auxiliary hydraulic	2 pcs. double acting
PTO	1000 rpm
Working speed	Creep gear recommended

Technical data:

Power range	70—150 hp
Transmission	Mechanical PTO
Final transmission	Mechanical with 2-row chain
Clutch	POC-2
Rotor diameter / width	600 / 735 mm
Cutter qty.	30 + 12 sides
Working depth	300 mm

Main dimensions:

Length	1540 mm
Width	1110 mm
Height	1330 mm
Weight, with options	1160 kg



SUOKONE OY
Lastaajantie 1
88610 Vuokatti

tel. +358 86 66 2011
suokone@suokone.com
www.mericrusher.com