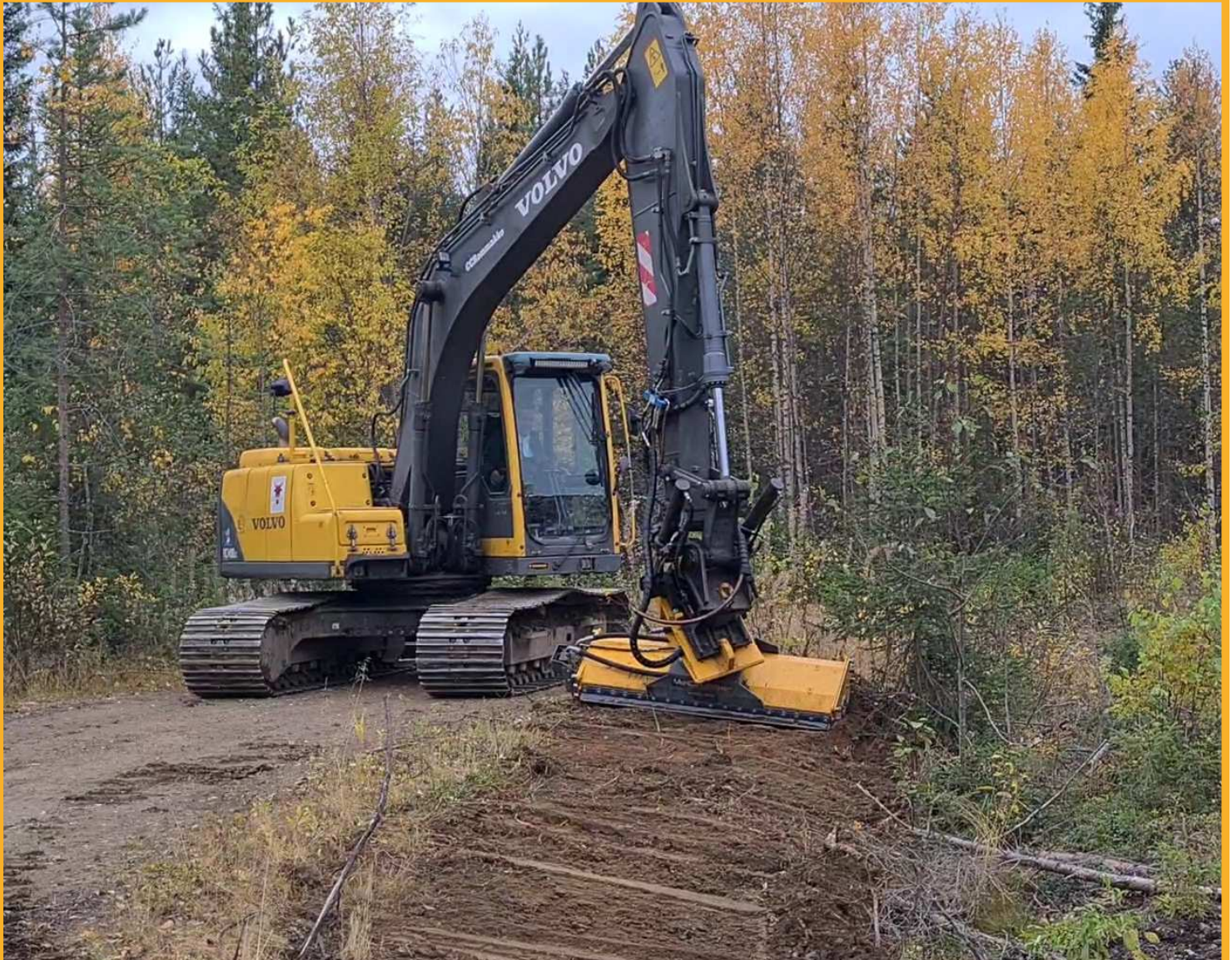


**MERICRUSHER**

**MC4-180**

**For excavators**

**For versatile crushing**



**MERICRUSHER**

# MERICRUSHER

## MC4-180

### For excavators

# For versatile crushing

#### MERICRUSHER WORKING ENVIRONMENTS

#### PROPERTY MAINTENANCE / GARDENING / CLEARING

- Removal of ice and hard packed snow from parking areas, inter sections and railway yards.
- Crushing of small stumps and branches
- Clearing of vegetation and undergrowth
- Clearing and maintaining of green areas
- Clearing of road sides from vegetation
- Clearing of ditch edges from vegetation
- Clearing of power lines from vegetation

#### EQUIPMENT

#### FEATURES

- Bolt mounted counter blades
- Fixed Hardox liner
- STE or UNV4 Rotor with cost effective carbide cutters
- Possibility to turn the direction of the rotor
- Multiple options for base machine attachment

#### OPTIONS

- Compacting plate
- Rotator with rotary coupler
- Multiple cutter options available

#### Base machine demand

Medium size excavators from 12-25 ton)

Mounting	NPT-10 / FLAT INTERFACE	
Hydraulic	Low pressure (case drain)	
Power demand ST / DT	200-240bar 2900 / 3600psi	110-160 & 180-300 l/min 28-42 & 47-79 gal/min
Lifting capacity	Min 1000kg / 2000 lbs	

#### Technical data:

Transmission	Hydraulic	
Hydraulic motor	Low pressure - gerotor motor	
Hydraulic motor	Connected directly to rotor DT = 2 hydraulic motors	
Rotor diameter	400 mm	20 inch
Rotor width	1750 mm	69 inch
Cutter qty.	76 (T25 rotor)	
Working depth	200mm / 8 inch	

#### Main dimensions:

Length	915 mm	36 inch
Width ST / DT	1995 / 2120 mm	78 / 83 inch
Height	930 mm	37 inch
Weight	600-900 kg	1200-2000 lbs



SUOKONE OY  
88610 Vuokatti  
FINLAND

tel. +358 86 66 2011  
suokone@suokone.com  
www.mericrusher.com